



High Street

Hartfield, East Sussex. TN7

humberts.com



A charming grade II listed village house, situated in the heart of this popular village, renowned for its connection to Winnie the Pooh.

- Hall
- Sitting room
- Study
- Kitchen/breakfast room
- Shower room

- 4 Bedrooms
- Family bathroom

- Attractive garden with terrace, lawn, greenhouse and an outhouse

- A garage could be available by separate negotiation



Property

This attractive semi-detached house dates back to the 16th century and has a wealth of exposed timber framing and beams. The oak front door opens into a hall, which is partly open to the sitting room. The sitting room is a good size with a fireplace flanked by shelving. The study has a fireplace and shelves with cupboards below in two corners. The kitchen/breakfast room has fitted wall and floor units, wooden work surfaces, a gas Aga, cooker, plumbing for dishwasher, quarry tiled floor and door to the terrace. There is also a pantry and a shower room.

On the first floor the landing has an airing cupboard, eaves storage and access to an extensive attic. The principal bedroom has a fireplace, built-in wardrobe and faces the High Street with views towards the church. Two of the other bedrooms have a similar aspect, while the fourth has views over the garden. There is also a family bathroom.

Outside

The garden is a particular feature and is accessed both via the side of the house and the kitchen. There are flagstone terraces leading out onto the lawn. Around the lawn are flower beds and a vegetable garden. At the bottom of the garden are views over a field and in the corner is a Yew tree with a paved seating area and barbeque. There is also an outhouse/workshop and log store.

Local Authorities and Services

East Sussex County Council: 03456080190.
Wealden District Council 01892 653311.
Council tax band F. All main services. Gas fired central heating. Freehold



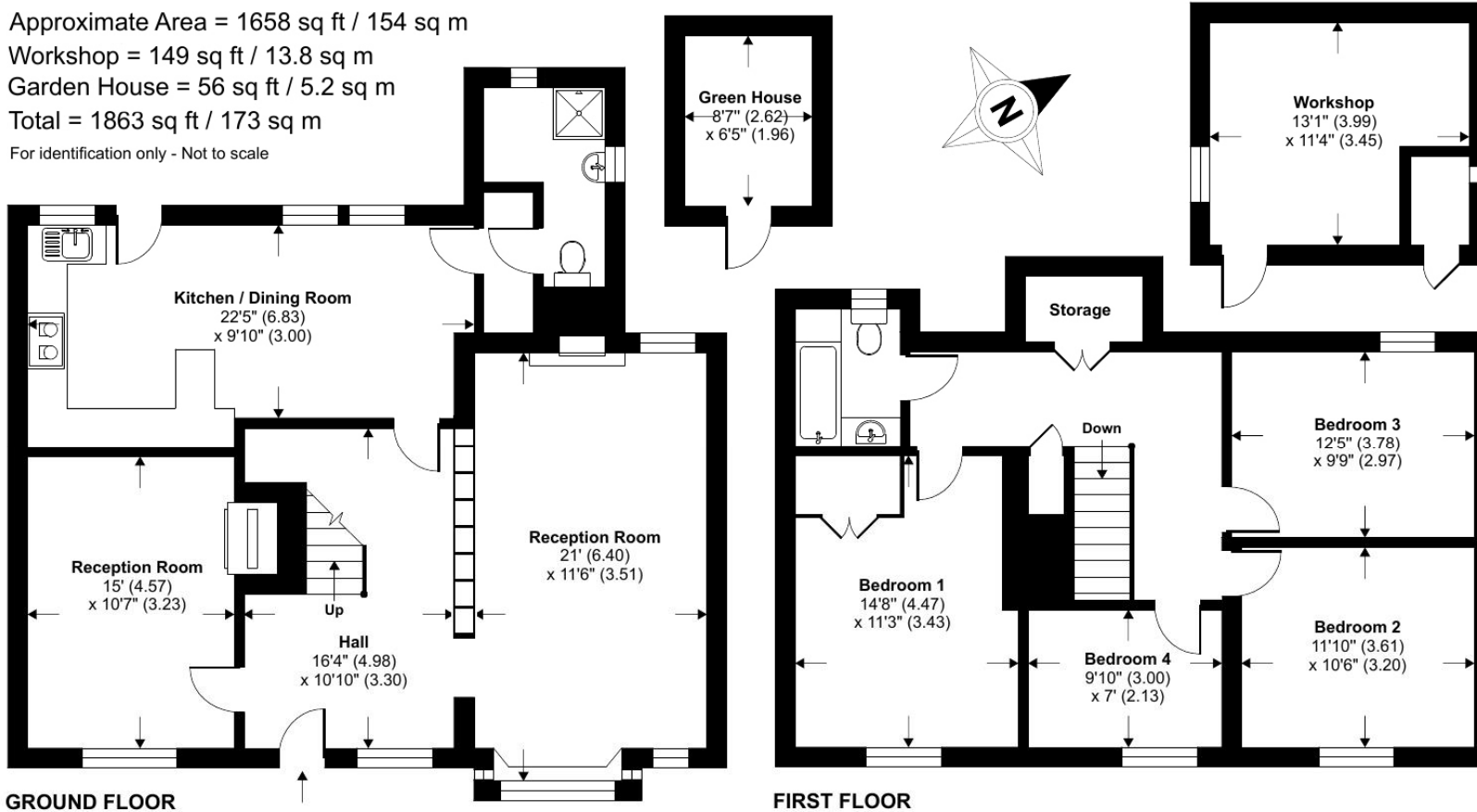
Approximate Area = 1658 sq ft / 154 sq m

Workshop = 149 sq ft / 13.8 sq m

Garden House = 56 sq ft / 5.2 sq m

Total = 1863 sq ft / 173 sq m

For identification only - Not to scale



GROUND FLOOR

FIRST FLOOR



Floor plan produced in accordance with RICS Property Measurement Standards incorporating International Property Measurement Standards (IPMS2 Residential). © nichecom 2022. Produced for Humberts. REF: 880973

Local Amenities

Hartfield is renowned for its connections to Winnie the Pooh and has a number of local amenities including a village shop, tea-room and public houses. For a more extensive range of shopping, educational and transport facilities Forest Row, East Grinstead, Tunbridge Wells and Crowborough are close by. Nearby Ashdown Forest is a great place for walking and enjoying spectacular views over the Sussex countryside. There is an extensive selection of excellent schools in the area including the village primary, Michael Hall, Cunnor House, Greenfields and Brambletye.

Directions

In Forest Row head towards Hartfield on the B2110. Proceed into the centre of Hartfield and the house will be found on the left opposite the War Memorial.

Communications

There are mainline railway stations at East Grinstead (Victoria/London Bridge) and at Tunbridge Wells (Cannon Street/Charing Cross) as well as Cowden and Ashurst. Gatwick is about 17 miles distant and the M25 is about 19 miles.

Simon Lewis Agencies Ltd trading as Humberts for themselves and for the vendor of this property whose agents they are, give notice that (i) these particulars do not constitute any part of an offer or contract, (ii) all statements contained within these particulars are made without responsibility on the part of Humberts or the vendor, (iii) whilst made in good faith, none of the statements contained within these particulars are to be relied upon as a statement or representation of fact, (iv) any intending purchasers must satisfy themselves by inspection or otherwise as to the correctness of each of the statements contained within these particulars, (v) the vendor does not make or give either Humberts or any person in their employment any authority to make or give representation or warranty whatsoever in relation to this property. Wide angle lenses may be used. Details 8/22. ©Copyright Humberts Group Limited.

01342 326326

forestrow@humberts.com

The Old Bakery, Lewes Road, Forest Row, East Sussex, RH18 5HA

