



HUMBERTS

Weston Mews

Weston, Honiton, East Devon, EX14 3PF

Weston Mews

Weston | Honiton | East Devon | EX14 3PF

A wonderful new development in a small East Devon hamlet, close to the desirable market town of Honiton with its amenities and excellent transport links

Honiton - 2 miles | Cullompton - 9 miles | Sidmouth 9 miles | Exeter 17 miles

- Small exclusive quality development
- Five linked/semi and detached dwellings
 - Beautiful barn conversion styling
 - Energy efficient
- Large windows and vaulted ceilings to optimise the views and light
 - Single and double storey living
- Superb bathrooms and en-suite shower rooms
 - Three and Four bedroom homes
- Fantastic communal courtyard and private gardens
 - Allocated parking spaces with EV chargers
- Sought after location with beautiful countryside views to the south

Guide Price Ranging From £475,000 - £695,000



Nest Modern Homes have been specialising in individual projects across the South West for over twenty years. They provide beautiful quality homes that produce contemporary open/plan living in small prestigious developments.

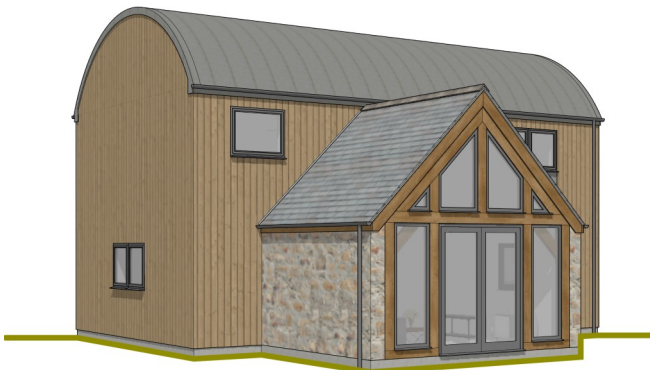
Each home has been carefully architecturally designed incorporating high quality, low maintenance finishes with the 21st century family lifestyle in mind.

Nestled in a lovely secluded location in a desirable village on the western fringes of the popular East Devon market town of Honiton

The development comprises five energy efficient homes set within a private site. Whether escaping city life, downsizing or simply looking for a new family home, these dwellings are designed to the highest modern standards and with versatility in mind.

The homes congregate around a shared inner courtyard which provides a real sense of space and seclusion.

Each home boasts a generous open plan kitchen, dining and living space, which can open out onto a rear garden area. Each home will have an Airsource Heat Pump heating system, fully insulated with its timber-framed construction and mains drainage.



PLOT 5

Guide Price £675,000

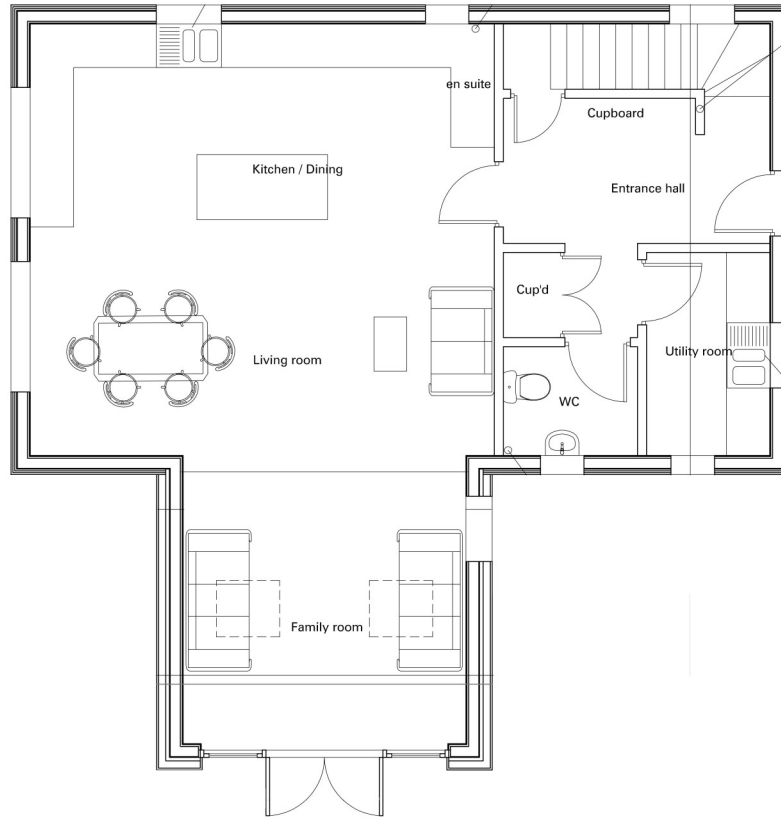
SIZE: 140.23M2

4 Bedroom Detached House

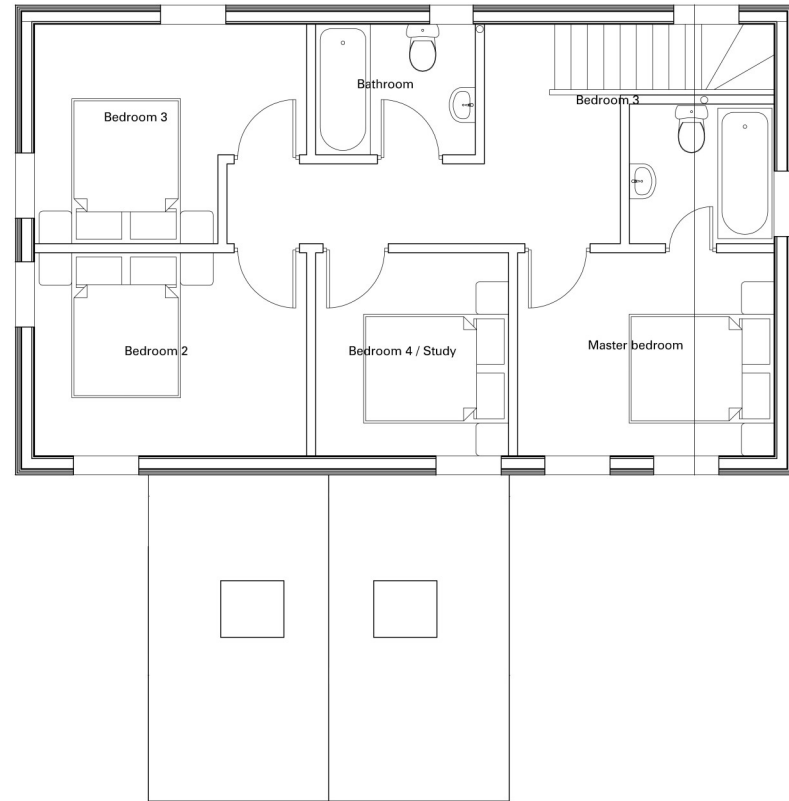
PLOT 5

SIZE: 140.23M2

4 Bedroom Detached House



GROUND FLOOR PLAN



FIRST FLOOR PLAN



PLOT 3 & 4
Guide Price £575,000

PLOT 3 & 4
Guide Price £575,000



PLOT 3 & 4

Guide Price £575,000

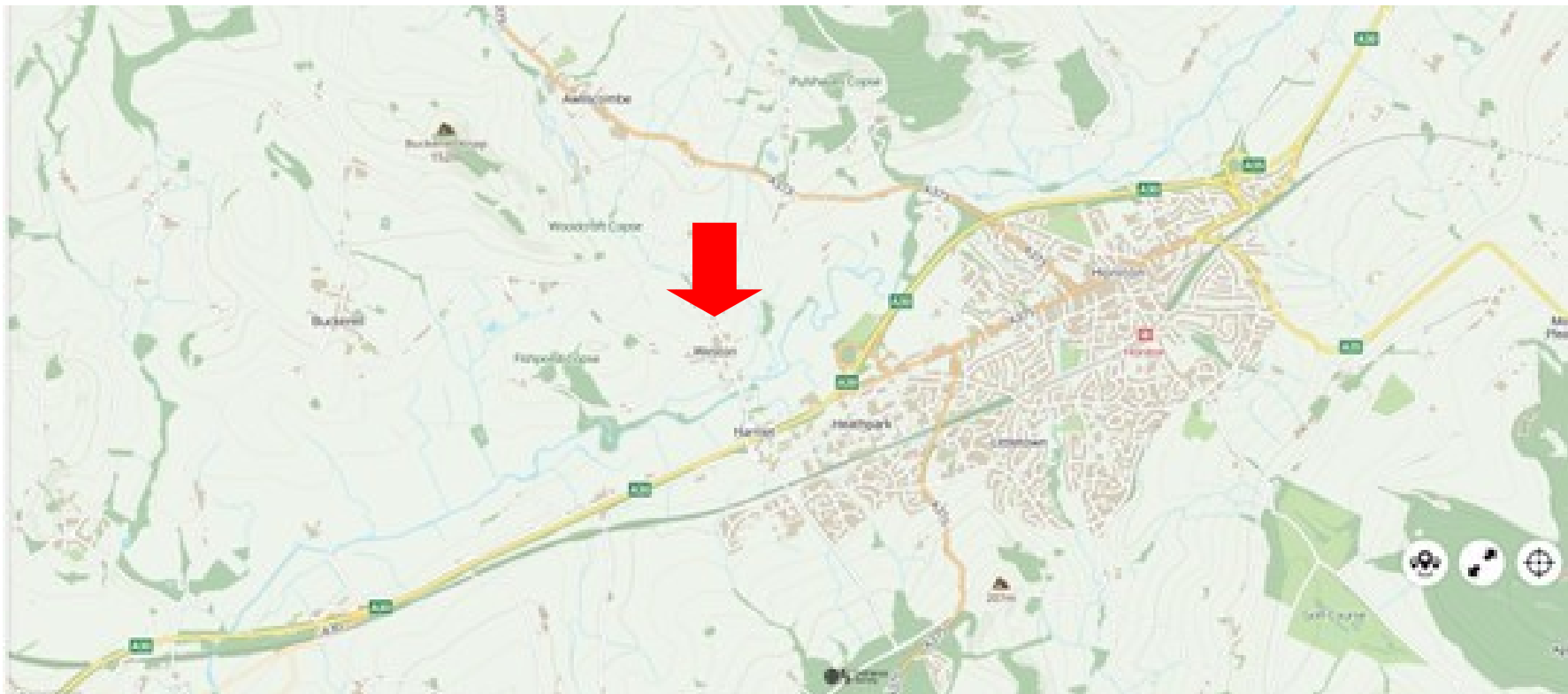


SITUATION

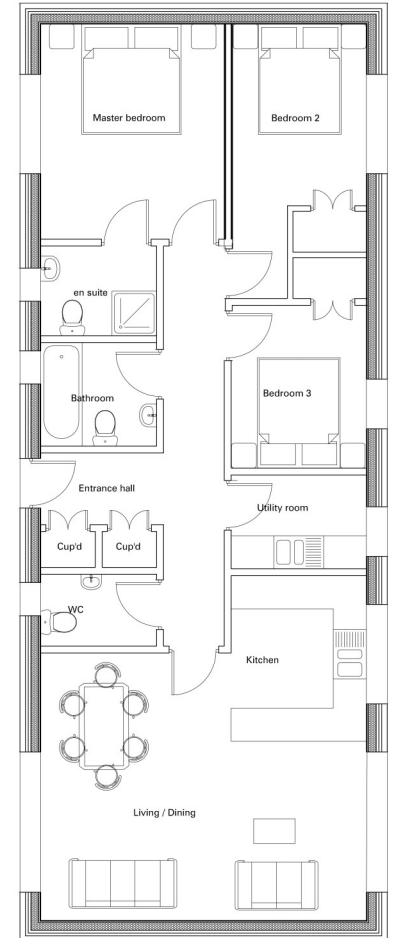
Weston Mews is situated in the tiny hamlet of Weston which in turn nestles in the Otter Valley approximately two miles from the bustling market town of Honiton. The development lies on the northern edge of the hamlet with both the popular Otter Inn and the wonderful Heron Farm café only a short stroll away. Delightful country walks emanate virtually from one's doorstep yet the market town of Honiton is just a few minutes drive away.

Honiton serves a large rural community and is particularly well-known as an antique and book centre as well as having most of the usual multiples such as WHSmiths, Boots, Tesco and a wide variety of other shops, restaurants, schools, sports centre/swimming pool, golf club and main line rail link to London (Waterloo). Honiton has excellent communication facilities with a dual carriageway to the Cathedral City of Exeter, some 17 miles to the west.

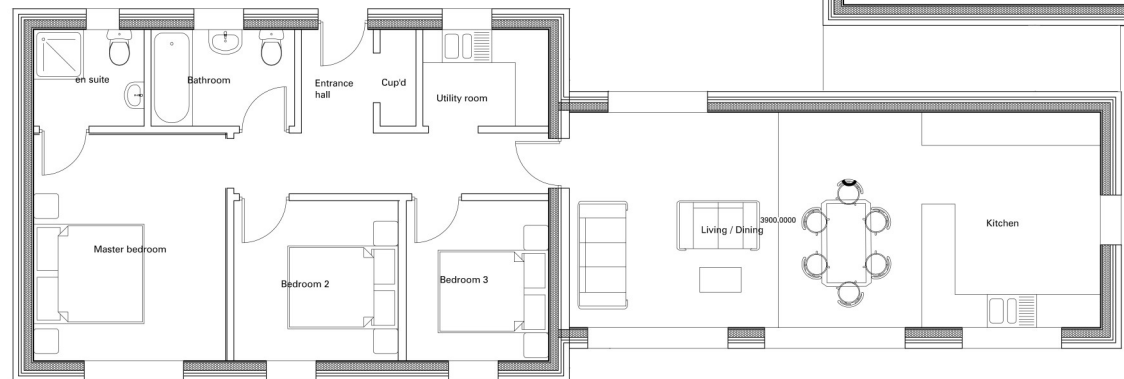
Exeter has excellent shopping and sporting facilities, theatres, art centre, main line rail link to London (Paddington) and a small international airport together with M5 access. Culyton Grammar School, one of England's top mixed grammar schools lies some 12 miles away. M5 access at Cullompton is some 9 miles to the north.







UNIT 1



UNIT 2

PLOT 1-2

Guide Price £450,000

PLOT 1 SIZE: 96.77M2

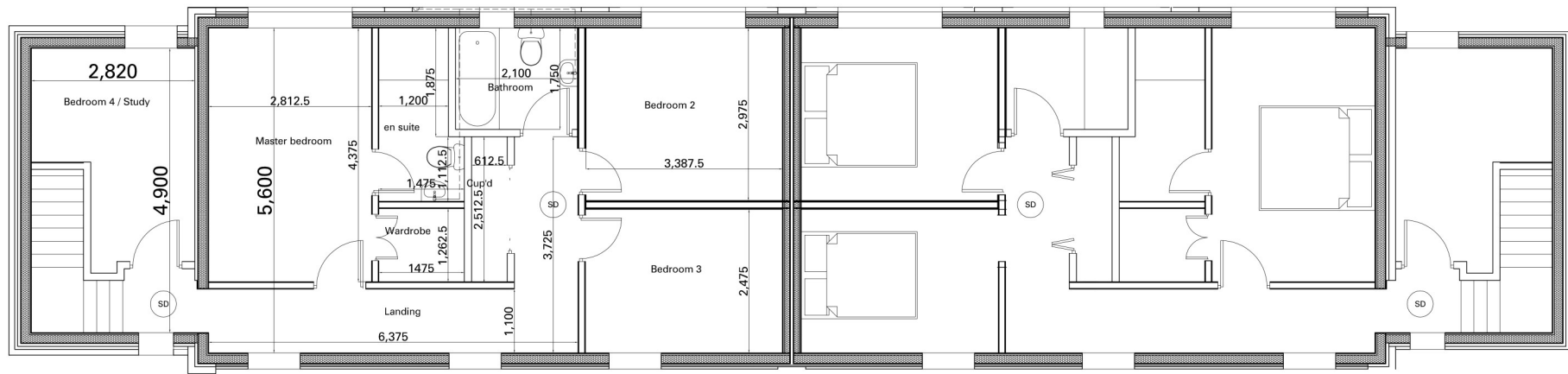
PLOT 2 SIZE: 94.74M2

3 Bedroom Linked-Detached Bungalow

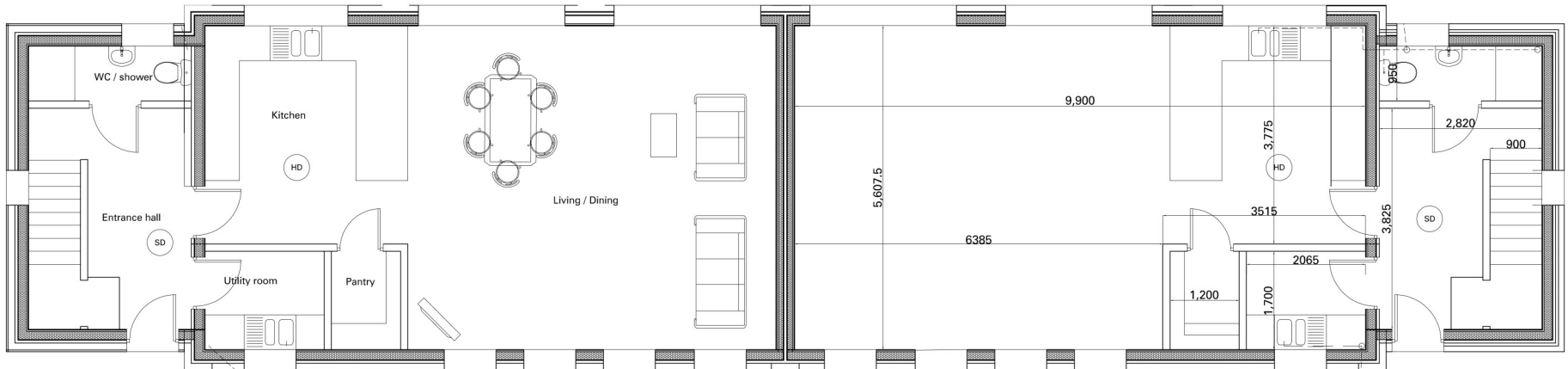
PLOT 3 & 4
Guide Price £575,000

SIZE: 136.70M2

4 Bedroom Semi-Detached House



FIRST FLOOR PLAN



GROUND FLOOR PLAN



River Otter

DIRECTIONS

From Honiton High Street proceed in a westerly direction towards Exeter, down a dip and up the other side onto Exeter Road. Follow this road across the mini roundabout and straight over the next mini roundabout, (just before you reach the dual carriageway) turn left before Lidl, signposted Buckerell and Weston. Turn right at the T junction and right again at the next T junction. Follow this road over the A30 and the River Otter, past the Otter pub. After a few hundred yards just past the turning to Buckerell, Weston Mews will be found on the left hand side.

ADDITIONAL DETAILS

- Planning Permission — No: 22/0178/FUL, granted 24 May 2022
- Tenure Freehold
- Local Authority — East Devon District Council - 01404 515616
- Viewing — Strictly to be arranged through Humberts Devon who will meet you on site. Please note that permission is not granted to enter the site without prior arrangement and Humberts Devon Ltd accepts no responsibility for any loss, damage or injury if this is not adhered to.
- Services — Airsource Heat Pump. Mains water and Drainage.

Disclaimer: Humberts for themselves and for the vendor/landlord of this property whose agents they are, give notice that (i) these particulars do not constitute any part of an offer or contract, (ii) all statements contained within these particulars are made without responsibility on the part of Humberts or the vendor/landlord, (iii) whilst made in good faith, none of the statements contained within these particulars are to be relied upon as a statement of representation or fact, (iv) any intending purchaser/tenant must satisfy him/herself by inspection or otherwise as to the correctness of each of the statements contained within these particulars, (v) the vendor/landlord does not make or give either Humberts or any person in their employment any authority to make or give representation or warranty whatsoever in relation to this property. © Copyright Humberts 2020 | Humberts Devon Ltd | Registered office; Humberts Devon Limited, 44 Queen Street, Honiton, Devon, EX14 1HD. Registered in England - Company Number 12430167.

01404 42456

devon@humberts.com

